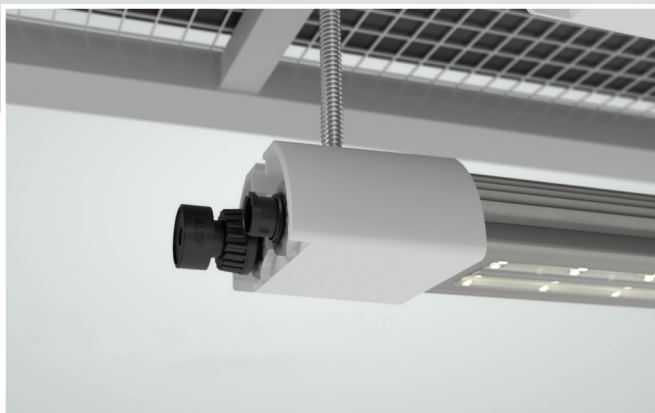


SIERA



VERSATILE **VERTICAL LIGHTING** FOR EVERY APPLICATION.



INDOOR | VERTICAL | RESEARCH

- Spectral Variants For Any Purpose.
- Hassle Free Mounting.
- Water Resistant to Operate in Any Environment.

SIERA MODEL SPECIFICATIONS

Wattage	Dimensions	Weight	Heat Value	Thermal Management	Max Ambient Temperature	Life Time	Power Factor	Beam Angle	Control	Warranty
0 - 46 W	25 x 50 x 1165 mm (1 x 2 x 46 in)	1 kg (2.2 lbs)	Up to 157 BTUs/hr	Passively convection cooled	40 °C (104 F)	L90 > 50 000h	> 0.95	119°	0-10V Dimming on Power Supply	3 years

Certified For: IP67, CE, ROHS, cETLus

INSTALLATION SPECIFICATIONS

SIERA - Top View



SIERA - Side View



SIERA - Bottom View



Mounting

Built in T - slot
(M6 Bolt)

Cable Length (to PSU)

3 m (9ft 10in)
1.5 m (4ft 11in)
0.5m (1ft 7in)

25 mm
/ 1 in



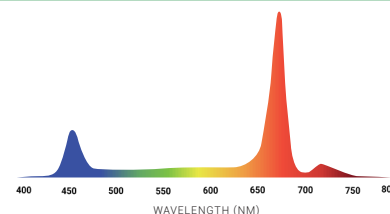
SIERA - Front View

SIERA - Rear View



50 mm / 2 in

SPECTRAL VARIANTS



helioSPEC Izar 2.8 μmol/J

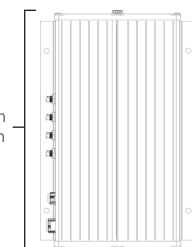
*Pending Certification

POWER SUPPLY

Power Supply - Front View

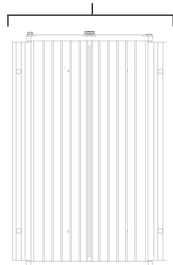


391 mm
/ 15.4 in



Power Supply - Top View

255 mm / 10 in



Power Supply - Bottom View

100 mm
/ 3.9 in



Power Supply - Side View

Electrical Information

Voltage	120 VAC	240 VAC	277 VAC
Amperage	5 A	2.5 A	2.17 A
Frequency	47/63 Hz	47/63 Hz	47/63 Hz
Inrush Current	-	-	-
Plug Type	Open Ended		
Wattage	600 W		
Parralel VDC Channels	Supports up to 12 light bars per unit.		

Physical Details

Weight	7.8 kg (17.2 lbs)
Dimensions	255 x 391 x 100 mm (10 x 15.4 x 3.9 in)
Cable Length	2 m (6ft 5in) PSU to plug
Certified For:	IP66, CE, ROHS, cETLus



Contact Heliospectra at:

SE: +46 31 40 67 10
NA: +1 888 942 4769
JP: +81 3 4405 3536



sales@heliospectra.com



<https://www.heliospectra.com/led-grow-lights/led-grow-light-bars/>

©Heliospectra AB, All rights reserved
Ver. 1.1



heliospectra