



LED LIGHT CONTROLLER



Maintain the full control of your LED installation

Highlights

- Control of fixtures based on light sum or dynamic light measured through a quantum sensor
- Control of light intensity in time zones
- Dividing the LED installation into groups
- To get the full benefits it should be installed with a quantum sensor
- More quantum sensors can be connected for optimizing of the light control
- Suitable for all Senmatic LED fixtures
- Can be connected to either a Senmatic Climate Controller or to one from another provider

The LED Light Controller is developed to get the most out of the FL300 and FL100, by making it possible to control the light intensity and the spectral composition throughout the day.

Senmatic offers the grower state-of-the-art expertise in terms of light and climate control. Regardless of your current climate control provider, the combination of the LED Light Controller and the FL300 makes an excellent solution for your company and your crops.

If you have an alternative climate computer provider, the LED Light Controller can be purchased together with the FL300 or FL100. In this way, you still maintain full control of your LED installation.

More energy savings

To get the full benefits of controlling the LED light, it should be installed together with a light sensor. It is possible to connect eight light sensors to the LED Light Controller. The light can then be controlled with dynamic intensity, light sum for down adjustment (DLI), or both.

Our fixtures FL300 and FL100 – more variants – all controllable

Our LED fixtures are available in many variants for greenhouses, climate chambers and garden centers, for growing in layer, as a top-light, and so on. Similar for all is that you can control the light intensity and spectral composition.



SPECIFICATIONS / LED LIGHT CONTROLLER

Technical specifications

Supply voltage	AC 85 - 264 V (wide range), 55/65 Hz DC95 - 250 V
Power consumption	64 VA
Communication	ETHERNET

Physical specifications

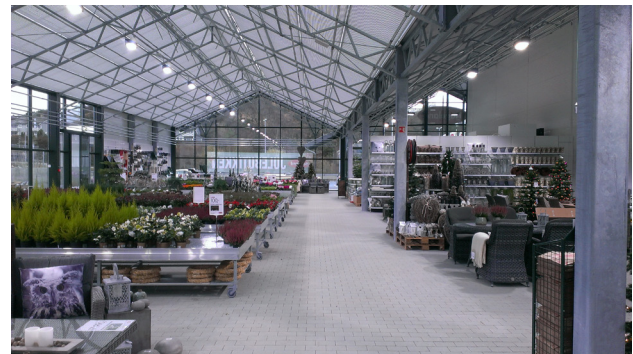
Net weight	Approx. 9 kg (20 lb)
Dimensions L x W x H	440 x 330 x 160 mm (17.3 x 13 x 6.3")
Operating temperature	0 - 50° C without direct sun radiation
Humidity	0 - 95 % without condensation
Density	IP 65

Basis I/O for the LED light controller or an expansion

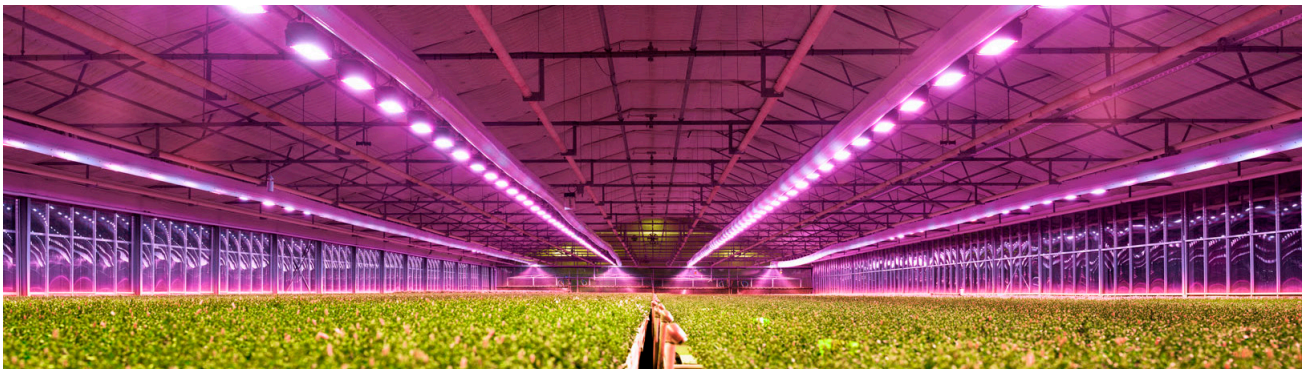
- 1 Digital input module with 8 inputs
- 1 Analog input module with 4 inputs
- 1 Digital output module with 8 outputs
- 1 Communication module for controlling LED fixtures
- More modules can be added.



FL100 installation in Holland



FL100 Sunlight installation in a
Garden Center in Norway



FL300 installation in Denmark

Distributor:

Head office:

Senmatic A/S
Industrivej 8, 5471 Sønderød, Denmark
Phone: +45 64 89 22 11
dgtsales@senmatic.com – www.senmatic.com